

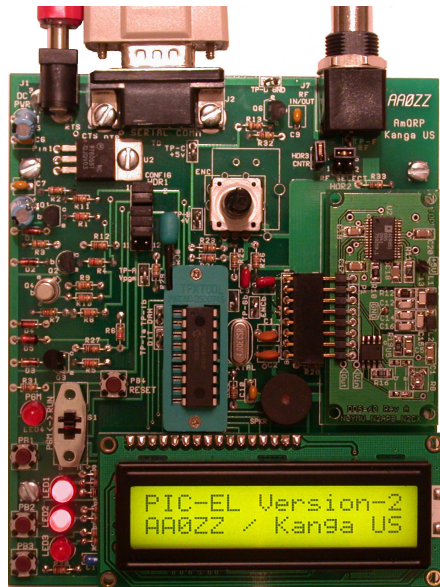
NEW!

AAØZZ PIC-EL II

A PIC Programming/Demonstration Board

By Craig Johnson, AAØZZ

Learn How To Program A PIC Microcontroller



Features:

- PIC Programmer for 18-pin PICs via PC Serial Port
- Test your PIC program with these hardware components:
 - * 2x16 line LCD (with backlight)
 - * Rotary encoder
 - * 3 general purpose pushbuttons
 - * Three LEDs
 - * Speaker with driver
 - * Stereo jack for paddle input
 - * Stereo jack with transistor driver to key a TX
 - * Transistor conditioner for converting low-level signals for PIC input (counter) detection
 - * Multi-purpose BNC connector for signal I/O
 - * 2x6 pin Header Block - allows attachment of a "foreign programmer" or a "foreign project board"
- 16F628 PIC – preprogrammed with PIC-EL diagnostics - included
- Use with PIC Programming lessons – www.amqrp/elmer160/
- Adapter for programming 40-pin PICs (16F877) also available

Price:

Full Kit: \$50

aa0zz@cbjohns.com

kanga@bright.net

www.kangaus.com **16F877 Programming Adapter Kit: \$15** www.cbjohns.com/aa0zz